



[Home](#) [Digital Editions](#) [Articles](#) [Featured Properties](#) [Advertising Agents](#) [Subscribe](#) [Contact Us](#)

You are here: [Home](#) > [W9 – Hidden beauty behind the Vale](#)

97

Like 1

W9 – Hidden beauty behind the Vale

by Alastair on [NOVEMBER 30, 2011](#) in [FEATURED PROPERTIES](#)



Hidden beauty behind the Vale

Tucked away in a smart area of W9, this well-maintained, six-bedroom house is spacious and airy, yet it retains the classical air of a well-established home. By Catherine Golding.

Visitors to this regal property don't so much walk through the various reception rooms as glide. Anything more energetic would be an affront to the serene atmosphere which permeates the house, ideally located in a private close just off Maida Vale. It's a beautiful, 3,014sq ft detached Arts and Craft-inspired home with large reception rooms which all have many period features, including fireplaces and exposed woodwork. High ceilings ensure that the correct perspectives are maintained and well-proportioned windows provide ample natural light. With large French windows in the dining room opening out onto the south-facing garden, there is plenty of opportunity to enjoy the pleasant outlook and the openness of the surroundings.

For those who like to furnish in a stylish, traditional manner this will provide an inspirational canvas.

Calming Atmosphere

£3,850,000

Ian Green Residential

020 7586 1000

Downstairs living areas include a drawing room, dining area, family room and kitchen/breakfast room. The smart entrance hall includes a magnificent wooden staircase which sweeps upwards to six bedrooms including a master bedroom incorporating en-suite bathroom and dressing room. The remaining bedrooms are served by two further bathrooms. Secure off-street parking is available and there's a separate lock-up garage,

LATEST DIGITAL EDITIONS



ADVERTISING AGENTS



SUBSCRIBE / CONNECT

Subscribe to our Social Media channels



[POPULAR](#) [LATEST](#) [COMMENTS](#) [TAGS](#)



CLEAR SIGHT
OCTOBER 10, 2011



Flat out for a return to glory
OCTOBER 10, 2011

too.



subscribe

Subscribe to our Social Media channels



Related Posts:

Modern Hampstead Home
Luxury living on many levels
London life in all its glory
Prime assets, polished facets
Best of both worlds

[houses](#), [Ian Green Residential](#), [London](#), [Maida Vale](#), [property](#)

← London life in all its glory

Luxury living on many levels →

No comments yet.

Leave a Reply

Name (required)

Email (will not be published) (required)

Website



Perfectly Positioned

OCTOBER 26, 2011

Distribution only prices

OCTOBER 20, 2011

Design, print and distribution prices

OCTOBER 20, 2011

SEARCH

Search...



ARTICLE ARCHIVE

November 2011

October 2011

IPAD AND IPHONE

Visit the App Store & find our Apps under 'Lifestyle'



TWITTER UPDATES

Follow Us



LondonPropMags Link takes you to introductions of recent editorial pieces, from which you can click and read the complete features. ow.ly/7lv2q
21 hours ago · reply · retweet · favorite



LondonPropMags London life in all its glory, as we dip into our December editions with a beautiful home in Islington ow.ly/7JttV
3 hours ago · reply · retweet · favorite

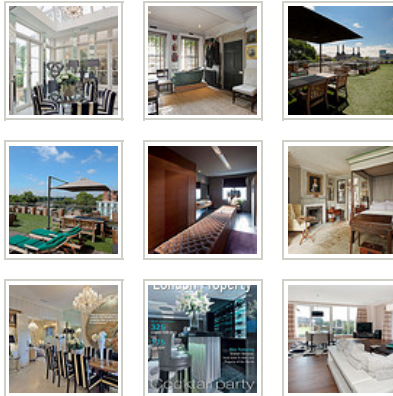


LondonPropMags Visitors to this regal property don't so much walk through the various reception rooms as glide ow.ly/7JtJt Find out more here



Join the conversation

PHOTOS ON FLICKR



CONTACT ADDRESS

LTP Publications Ltd
5th Floor,
Checknet House,
153 East Barnet Road,
New Barnet,
Hertfordshire EN4 8QZ

E: info@londonpropertymagazines.com

